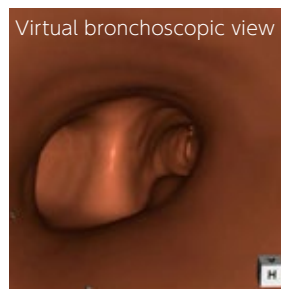
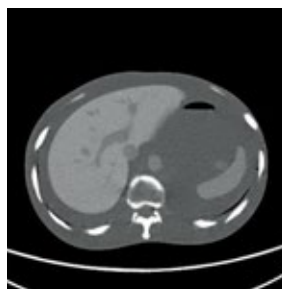
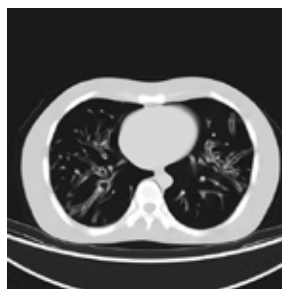


PH-4 | 41324-040

CT Torso Phantom CTU-41



A one-piece anthropomorphic torso phantom with anatomical structures allows various CT approaches including helical scanning



FEATURES

- | One-piece structure of the phantom facilitate study in volume | CT scan including helical scan.
- | The phantom can be used for alignment in Image Guided Radiation Therapy (IGRT)

APPLICATIONS

ANATOMY

- | Synthetic bones with cartilage
- artificial skull, vertebrae, clavicles, ribs, sternum, scapula, coxal bones, femurs

| Internal organs | | Hounsfield Number | Internal organs | | Hounsfield Number | |
|-------------------------------|------------------------------|-------------------|-----------------|-------|-------------------|----|
| Soft tissue around each organ | | -7 | Liver | Whole | 70 | |
| Brain | Brain | 40 | | Vein | 40 | |
| | Ventricles | 10 | Gallbladder | | 20 | |
| Eye balls | | 20 | Pancreas | | 30 | |
| Aorta | | 40 | Spleen | | 50 | |
| Vena Cava | | 40 | Kidney | Whole | 30 | |
| Trachea | Up to the first branch | -800 | | | Vein | 40 |
| | The second -the third branch | -7 | | | Urethra | 10 |
| Heart | | 40 | Urethra | | 10 | |
| Pulmonary Blood Vassal | | -7 | Urinary Bladder | | 10 | |
| Cartilage in Costae | | 90 | | | | |

DESCRIPTIONS

SET INCLUDES

- 1 CT torso phantom
- 1 set of sample X-ray data (DVD)
- 1 storage case manual

MATERIALS

Soft tissue: urethane based resin (specific gravity: 1.06)
 Synthetic bone: epoxy resin (specific gravity: 1.31)

SPECIFICATIONS

Phantom height: 100 cm
 39.4 in

Phantom weight: 45 kg/ 99 lb

Packing size: W106 x D58 x H62 cm
 W42 x D23 x H24 in

Packing weight: 52 kg/ 114 lb

